



WILD DUNES

by Kirsten Joel



DESIGN INFORMATION

Wild Dunes is a crescent shawl knit mostly in stockinette stitch and featuring a gentle lace panel. The knit on lace edging creates a pretty & quick finish to the shawl. The lace panel and lace edging are both easy to remember and instructions are provided in both charted & written format. Wild Dunes is a great pattern for most shawl knitters, including adventurous beginners.

With the right yarn choice, this shawl can take you from summer into fall and pairs well with most outfits.

Please share your progress on Instagram by tagging me @kirstenjoel_designs and using the hashtag #wilddunesshawl. I love to see all of your works in progress and finished projects!

kirstenjoel.com

All text, images, & illustrations ©2023 Kirsten Joel
For personal use only

SKILL LEVEL



FINISHED MEASUREMENTS

78" wingspan by 26" deep, including the lace edging

YARN

Sample A: Prism Yarns Delicato Layers - Lace weight; 100% Tencel; 630 yards (576 meters) / 115g (4.06 oz); 2 skeins, photographed in Antique.

Sample B: Megs & Co Ellis- Lace weight; 80% Rambouillet, 20% Fine Wool; 600 yards (549 meters) / 95g (3.35 oz); 2 skeins, photographed in Dahlia.

Or ~630 yards of a lace-weight yarn.

GAUGE

25 sts and 30 rows = 4" over Stockinette stitch, blocked

NEEDLES

US 3 / 3.25mm 32" circular needles, or size to obtain gauge.

Note: The shawl is worked back & forth in rows. Circular needles are used to accommodate the number of stitches.

TOOLS

Tapestry needle, blocking wires, blocking pins.

HELPFUL LINKS

For help with the following techniques, visit the following links:

[Swatching](#)

kirstenjoel.com

All text, images, & illustrations ©2023 Kirsten Joel

For personal use only

[Blocking](#)

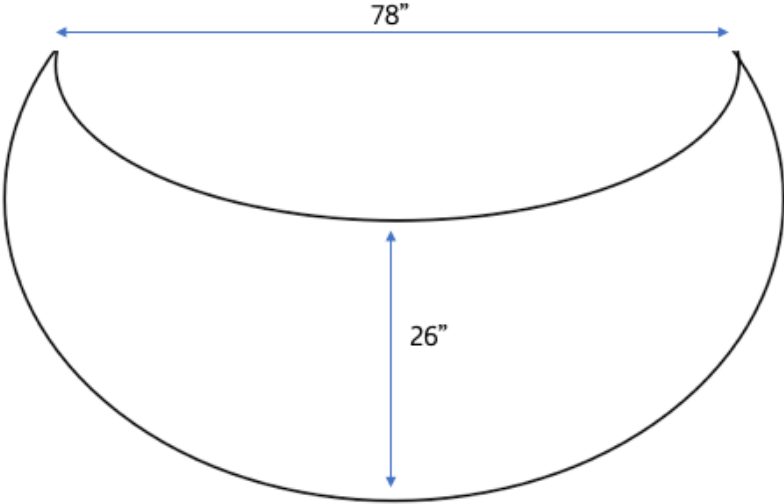


kirstenjoel.com

All text, images, & illustrations ©2023 Kirsten Joel

For personal use only

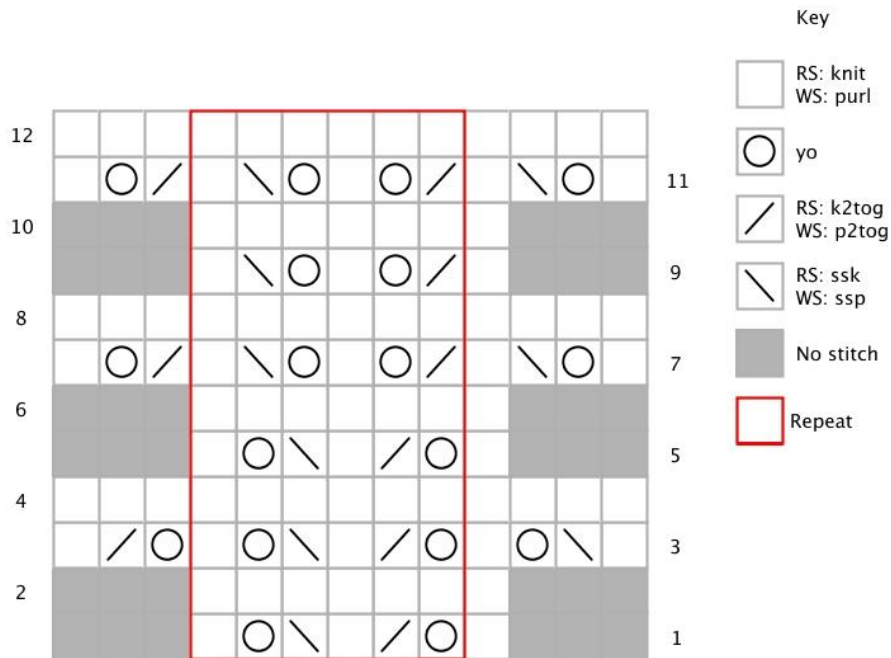
SCHEMATIC



STITCH PATTERN

CHART INSTRUCTIONS

Lace Section



WRITTEN INSTRUCTIONS

Lace Section

Row 1 (RS): K1, *yo, k2tog, k1, ssk, yo, k1; rep from * to end.

Row 2 (and all WS rows): Purl.

Row 3: K1, ssk, yo, k1, *yo, k2tog, k1, ssk, yo, k1; rep from * to last 3 sts, yo, k2tog, k1.

Row 5: Rep Row 1.

Row 7: K1, yo, ssk, k1, *k2tog, yo, k1, yo, ssk, k1; rep from * to last 3 sts, k2tog, yo, k1.

Row 9: K1, *k2tog, yo, k1, yo, ssk, k1; rep from * to end.

Row 11: Rep Row 7,

Row 12: Purl.



ABOUT THE DESIGNER

Originally from Los Angeles, Kirsten moved to Charleston, SC with her husband Jason and quickly planted roots with a group of girlfriends and started her family. She strongly believes in designing knit patterns that are portable, meditative, and quietly sophisticated. Her designs allow you to be present for all of life's little moments and create finished pieces that will quickly become wardrobe staples. She loves working with wool, silk, cotton, and linen in classic, neutral

colors.

CREDITS

Tech Editing: Chaitanya Muralidhara

CONTACT

A lot of hard work goes into ensuring these patterns are simple to understand and error free. If you get stuck, need extra guidance, or think there may be an error please email hello@kirstenjoel.com and I will connect with you as soon as I can.

SUBSCRIBE

Enjoyed this pattern? [Subscribe to my newsletter](#) to be the first to know when new designs are launched. I'll also send helpful tips & techniques so that you can connect with your craft and make the most of your knitting practice.

kirstenjoel.com

All text, images, & illustrations ©2023 Kirsten Joel

For personal use only

YOU MIGHT ALSO LIKE...



JORDAN



EGRET



ENOREE

kirstenjoel.com

All text, images, & illustrations ©2023 Kirsten Joel

For personal use only